

# Pictures at SERE 2014

Day 2 (July 1)



SOFITEL  
LUXURY HOTELS







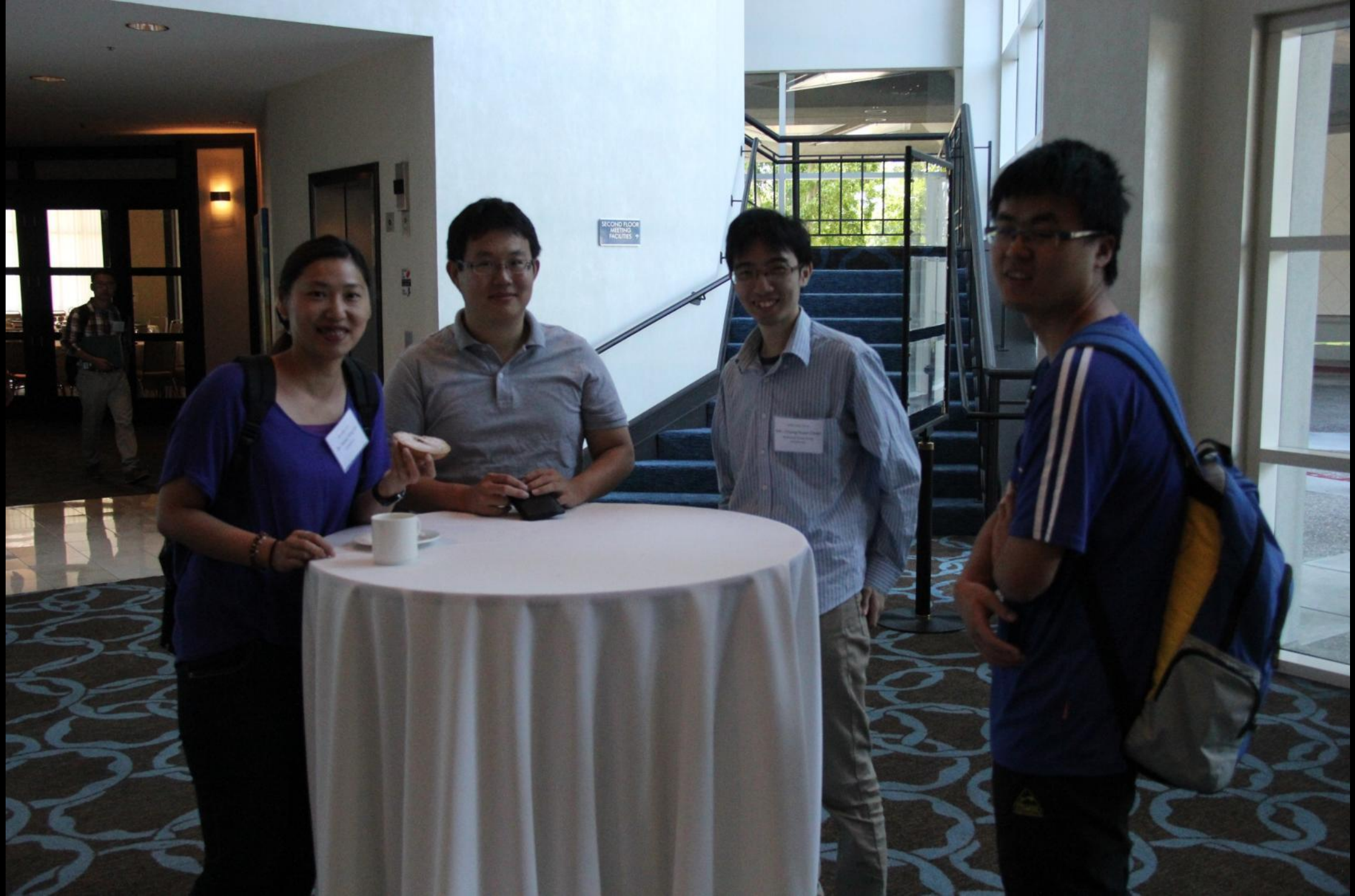










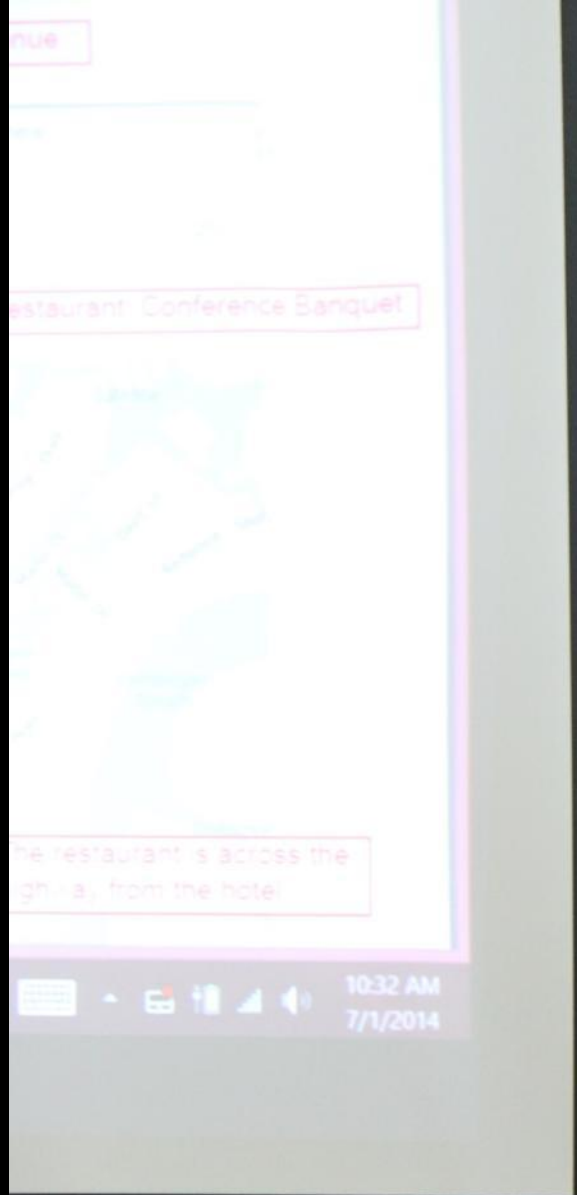












2014-08-01  
Prof. Wen Dong  
Southern University of Science and Technology

2014-08-01  
Prof. Wen Dong  
Southern University of Science and Technology

ELOCH



S O F I T E L

L U X U R Y H O T E L S









IEEE SERIE 2014  
Dr. Curtis Busby-Earle  
University of the West Indies



IEEE SERE 2014  
Prof. Jun Ai  
Beihang University







Mr. HONG CHAN  
Member of Public Group

Mr. HONG CHAN  
Member of Public Group

Mr. HONG CHAN  
Member of Public Group













## Requirement Items

- Function:  $F_i$
- Date Resource:  $D_i$
- Constraint:  $C_i$
  
- Informal Specification:  $S_i = (F_i, D_i, C_i)$





IEEE SERE 2014  
Mr. Stefan Groesbrink  
University of Paderborn

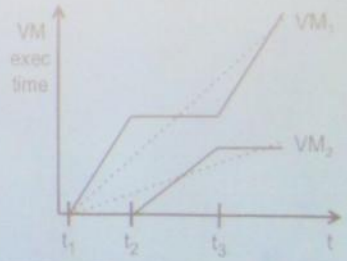
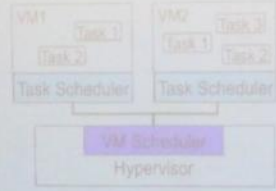
EXIT



### Hierarchical Real-time Scheduling

UNIVERSITY OF PITTSBURGH  
SCHOOL OF ENGINEERING  
DEPARTMENT OF ELECTRICAL ENGINEERING  
Fall 2014, Lecture 11

#### Hierarchical Scheduling





2014-2015  
Ms. Lena Henschel  
Head of Planning



EXIT

## How should your ability be tested?

- The process/protocol should be:
  - practical
  - should not be repetitive or tedious
  - and should be consistent over time
- The measure should be derived from:
  - self-rated work
  - Other sources if available
- The assessment method should satisfy the following:
  - It should combine multiple sources
  - The method should assess subjectivity
  - The method should minimize human involvement in performing assessment (automated)





2022-06-06 2014  
Mr. Chung-Yi Lin  
Chungwa Telecom







Document posted on the wall to the left of the men.

**SERI 2015**  
The 8th Int'l Conference on Software  
Security & Reliability  
10-14 July 2015  
San Jose, CA, USA  
www.seri2015.com

**GRAND SALON**  
8th Int'l Conference on Software  
Security & Reliability



Mr. Ka-ho Lo

EXIT

EXIT









EXIT

## Our Solution: Light-weight Resource Pr

- RVL: a light-weight resource virtualization system
  - Virtualizes various resources system-wide
  - Provides a consistent virtual view per application
  - High compatibility with real-world applications









EXIT

single host, and attempts  
on internal hosts

promised host takes some

er focuses on pivots  
ing (being stealthy or IPv6)  
ded

efficiently bound the number  
ompromise assessment

s, exploits which we are  
ormal' privilege





## Conclusion

- Dynamic forward slices can be surprisingly inaccurate – more than what researchers and developers would expect
- Inaccuracy can vary considerably
- Future work:
  - Study more cases and understand circumstances
  - Study effects of inaccuracy on developers' productivity









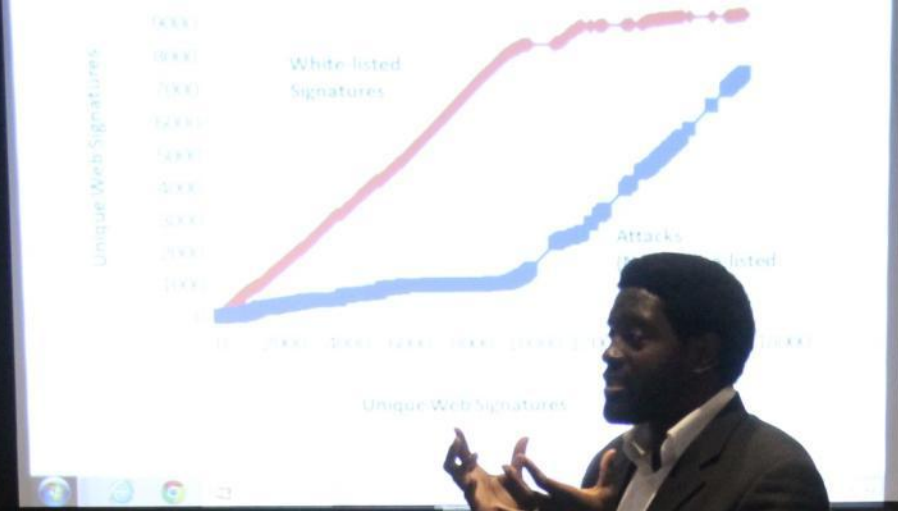
# Testing Apps

	CPU	Memory	IPC	Diff	C=0.5	C=0.35	C=0.2	
Google	0.880	0.902	0.284	0.279	x	x	x	
Yahoo	0.780	0.749	0.268	0.279	x	x	x	
Amanaw	0.650	0.782	0.750	0.836	x	x	x	
Bank	0.780	0.725	0.295	0.233	x	x	x	
AccWeather	0.880	0.812	0.328	0.239	x	x	x	
Aurbit	0.880	0.863	0.210	0.214	x	x	x	
Geog Farmer	0.770	0.745	0.290	0.257	x	x	x	
Person Pro	0.780	0.889	0.170	0.241	x	x	x	
Extreme CPU	0.950	0.879	0.089	0.361	x	x	x	
Extreme MEM	0.750	0.880	0.076	0.412	x	x	x	
Extreme IPC	0.820	0.775	0.080	0.377	x	x	x	
					FP Rate	12.7%	12.5%	10.9%
					FN Rate	1%	0%	0%

A man in a light blue polo shirt and glasses stands in a conference room, gesturing with his hands as he presents. He is positioned to the left of a large projection screen.

EXIT

An audience member is visible in the foreground, looking towards the presenter. The room contains several chairs and a table with a black tablecloth.



## Conclusions and Questions

- Network taint analysis
  - is tractable on large networks
  - can partition between 'safe' and 'unsafe' hosts
  - can prioritize evaluation based on taint distance
    - (if you take into account homogeneous hosts)
  - dynamic security perimeter conceptualization can further bound hosts to be investigated











Free Delivery  
Tel: (650) 593-1831

www.chinavillagebalmont.com  
Sun Sun Day & Night



Chinese  
Chris

Order & Catering  
also available



Mr. Guy  
Guy









嘉士伯啤酒有限公司







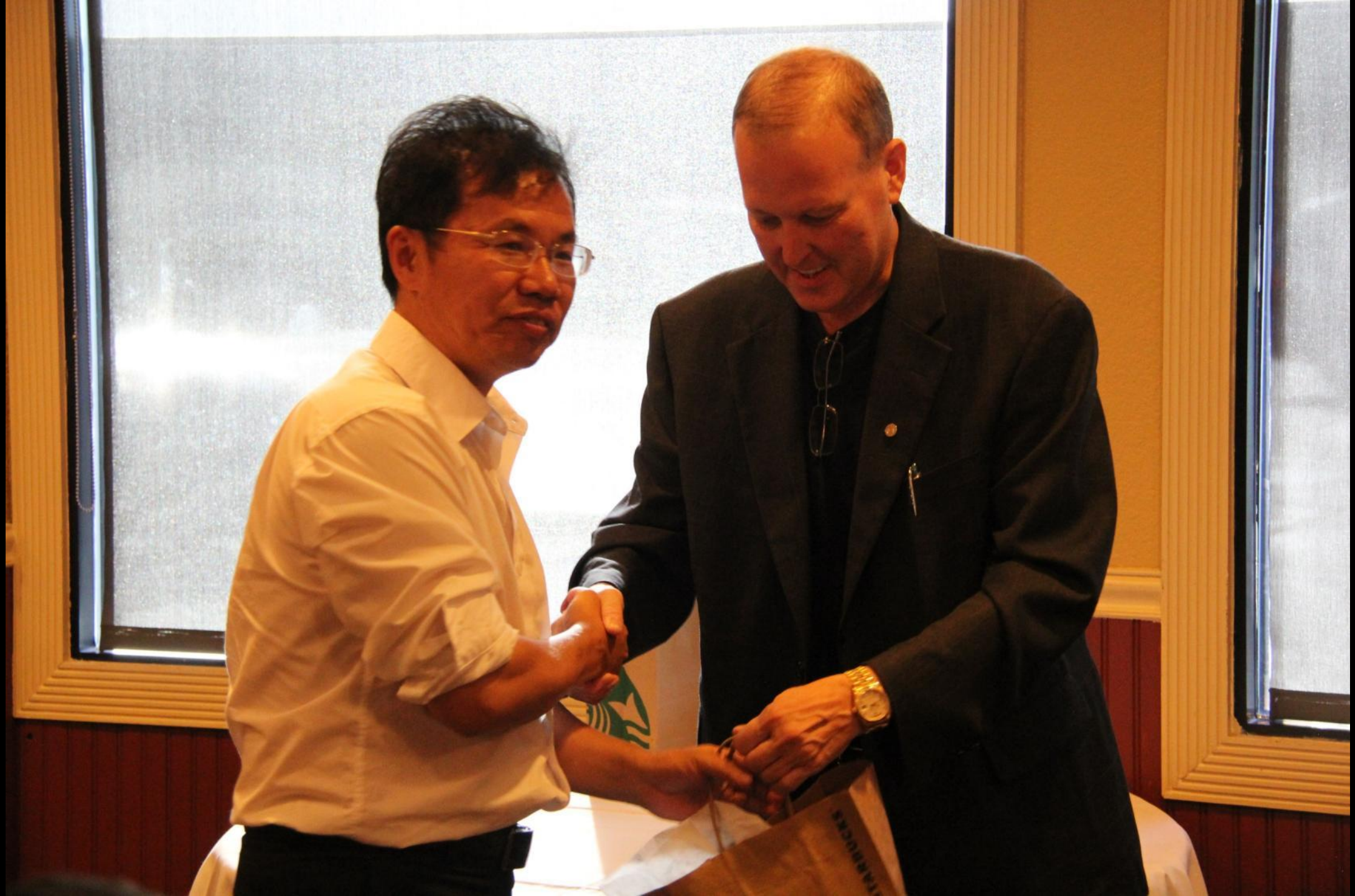








2014-09-08 14:14  
Prof. Yunwei Dong  
Northeastern Polytechnical  
University







































All the pictures will be available at

the SERE 2014 Conference Website

<http://paris.utdallas.edu/sere14>

after July 4th